



**MORE THAN LIFTING**

# **CAPABILITY STATEMENT**



An aerial photograph showing a large white lattice boom crane lifting a heavy load on a city street. The crane is positioned on the right side of the frame, with its boom extending diagonally across the image. The load being lifted is a large, rectangular object, possibly a piece of machinery or a container. The surrounding area includes a large building with a white roof, a parking lot with several cars, and a green lawn with some trees. The text "ABOVE AND BEYOND TO EXCEED ALL CUSTOMER EXPECTATIONS." is overlaid in large, bold, white letters with a black outline, spanning across the middle of the image.

**ABOVE AND  
BEYOND TO  
EXCEED ALL  
CUSTOMER  
EXPECTATIONS.**



# Contents

<b>About us</b>	<b>5</b>
Our Advantage	6
<b>Services</b>	<b>8</b>
Crane Hire	9
Heavy Lift	10
Specialist Lift	11
Transport	12
Access Equipment	13
Machinery Relocation	14
Service and Maintenance	16
Lift Study Centre	18
<b>Our extensive crane fleet</b>	<b>20</b>
Crane fleet inventory	22
<b>Our Culture</b>	<b>25</b>
<b>HSEQ</b>	<b>26</b>





# MORE THAN LIFTING



# About us

**Fleurieu Cranes is your preferred partner in complete end-to-end crane hire and lifting solutions.**

Established in 2005, Fleurieu Cranes has grown to become one of South Australia's most trusted partners in crane hire and lifting solutions.

We are the Crane Hire specialists with a fleet of 45+ mobile cranes. Our expert crews deliver safe and efficient solutions 24/7.

Our extensive experience across a broad range of industry sectors has allowed us to successfully deliver some of the state's most technical and challenging projects.

At Fleurieu Cranes, we specialise in crane hire, labour hire, and logistic solutions, servicing various industries.

We work closely with our project partners, using the best people, plant, equipment, expertise, and project logistics to deliver the best lifting solutions – efficiently and safely.

Our operations team is available 24 hours a day, 7 days a week to assist with your project.

**Fleurieu Cranes – more than lifting.**

# Our Advantage

**We set the bar high and go above and beyond to exceed all customer expectations.**



## Specialised Lifting Equipment

We purposefully invest heavily in our fleet of cranes, transport and specialised lifting equipment with decision-making focusing on ability, technological advances and environmental factors. Our extensive fleet includes over 45 cranes, with associated transport / access, specialised rigging and ancillary equipment. Keeping all this equipment operating safely and efficiently is a focussed and passionate workforce of 140 personnel.



## 100% Australian Owned

Fleurieu Cranes are proud to be 100% South Australian owned ensuring responsive decision-making and a key understanding of individual client and project requirements.



## 'Safety First' culture

We are committed to the health and safety of our people and those with whom we interact. This commitment is underpinned by our 'Safety First' culture and evidenced by our exemplary safety record and continuous improvement ethos.



# ABOVE AND BEYOND

# Services

**Fleurieu Cranes have a broad range of Crane Hire options and complimentary lifting services to deliver any project.**

**Wet and Dry Crane Hire**

**Heavy Lift**

**Specialist Lift**

**Transport**

**Access Equipment**

**Machinery Relocation**

**Service and Maintenance**

**Lift Study Centre**

**Fleurieu Cranes**  
Safety First



# Crane Hire

## Fleurieu Cranes have one of South Australia's largest fleets of cranes and lifting equipment to help deliver a wide range of projects.

Our extensive, certified and modern fleet of cranes for Wet and Dry Hire coupled with our broad range of lifting equipment, haulage, transport and access equipment allows us to offer a complete end-to-end lifting solution.

Our extensive fleet has grown to over 45 cranes, including mobile, pick & carry, crawler and all terrain cranes, with associated transport and access equipment.

Our equipment has been carefully selected for a broad range of industry applications with lift capabilities ranging from 3T to our 700T All-Terrain Liebherr – the largest road compliant 'boom on' model to exist, providing easy transportation and quicker assembly and disassembly times.

Our specialist lift team can tailor a lift solution, plan and execute with the right equipment suitable to your individual requirements.



### Wet Hire

Fleurieu Cranes operates a fully versatile crane fleet available for Wet Hire, capable of completing any job safely and efficiently.

#### Our Wet Hire service includes:

- ▶ Qualified and experienced operators and riggers, supported by our team of supervisors, leading hands, engineers and office support personnel.
- ▶ Standard and specialised lifting equipment managed in-house through our comprehensive rigging store.
- ▶ Site inspection service prior to the lift and a computer generated lift plan to assure our cranes are capable of completing your project.
- ▶ Support from our team of experienced supervisors, dedicated HSEQ team, and an in-house engineering department to assist with your lift study, AutoCAD, JSEA's and SWMS's requirements.



### Dry Hire

Fleurieu Cranes operates an extensive fleet of Dry Hire Cranes including City Cranes, Frannas, All Terrain and Crawler Cranes. We aim to supply our clients with the best-in-class, fault free cranes.

#### Our Dry Hire service includes:

- ▶ Pre and Post inspections to ensure reliability.
- ▶ Our fully equipped workshop and personnel maintain and service our fleet to ensure maximum reliability, efficiency and availability.
- ▶ Phone support and trouble-shooting – and if necessary onsite maintenance and repairs.



## Heavy Lift

**Whenever large and heavy components need to be lifted, Fleurieu Cranes can supply the equipment, expertise and experience to do the job safely and efficiently.**

Fleurieu Cranes have one of the most modern fleet of heavy lifting equipment with lift capacity ranging from 300 Tonne all-terrain models to our state of the art 700 Tonne Liebherr 1650-8.1 Crane – the largest road compliant 'boom on' model to exist, providing easy transportation and quicker assembly and disassembly times.

Our specialised heavy lift equipment and experienced team of professionals ensure safe and efficient operation and project delivery. We have the right cost effective solution for your heavy lifting needs.

Our heavy lift team is also supported by our transport and haulage team offering a complete transport and lift & shift solution for your project.





## Specialist Lift

### Complex and technically challenging lifts require a highly experienced and expert team.

The Specialist Lift team at Fleurieu Cranes have the experience and equipment to maximise efficiency and deliver successful project completion.

Our experienced specialised lift team are allocated to our projects to ensure a main point of contact, maximum efficiency, and successful completion. Additionally, we also have an in-house Lift Engineering team who provide Lift Plans and Lift Studies for the most complex of lifts, along with our HSEQ team who provide job specific SWMS, and safety advice as required.

The Specialist lift team is supported by 45+ cranes and logistics solutions including prime movers, specialised semi-trailers, tray tops, rigids and associated light vehicles.

In addition, our Crane fleet is complimented by our specialist lifting equipment, including high-capacity slings, blade socks, shackles, spreader bars, purpose designed outrigger mats and more.

#### Our dedicated team and specifically selected equipment are highly experienced in:

- ▶ Windfarm and renewable projects
- ▶ Power and Energy Infrastructure
- ▶ Tower Crane Erection and Dis-assembly
- ▶ Infrastructure
- ▶ Highly engineered lifts (ie multiple crane, large radius)

Fleurieu Cranes offer concepts, innovative ideas, and solutions. We'll happily assist with feasibility studies, engineering lift studies and design along with other associated services. Fleurieu Cranes are committed to ensuring our specialist lift projects are delivered successfully, meaning efficient, within budget and of the highest standards of safety and quality.





# Transport

## Fleurieu Cranes offer complete transport and logistics solutions, delivering your project safely and efficiently.

### Specialised Transport Solutions

Our dedicated specialist team manages an extensive fleet of transport equipment with a focus on understanding each project's specific requirements and objectives to deliver innovative and cost-efficient transport solutions.

We can service a wide range of industries including mining, energy & renewables, industrial and construction with our specialised fleet of heavy transport equipment.

Fleurieu Cranes have the expertise to deliver complex projects hassle free with the relevant permits, permission and traffic management plans in place.

### Our transport equipment includes:

- ▶ Tray Top Trucks
- ▶ Prime Movers
- ▶ Flat Top Semi Trailers
- ▶ Drop Deck Semi Trailers
- ▶ Crane Truck 12T with 4T Crane
- ▶ Crane Truck 12T with 7T Crane



## Access Equipment

**No matter how difficult the site, Fleurieu Cranes have just the thing to get you up there safely and easily.**

Work safely from height with our range of equipment

Fleurieu Cranes hires and maintains a range of ancillary and access equipment, including boom lifts, telehandlers, scissor lifts and more to assist with your project.

**Our ancillary equipment includes:**

- ▶ 46ft Straight Boom Lift
- ▶ 66ft Straight Boom Lift
- ▶ 12T Telehandler
- ▶ Scissor lift





# Machinery Relocation

## Fleurieu Cranes is one of the market leaders in heavy equipment moving and relocation.

Our highly skilled professionals work alongside our clients' teams to move and relocate your heavy machinery and equipment, with minimal disruption to operations.

We know that as businesses grow and adapt, so do their machinery requirements, and we're here to assist clients who find themselves needing to modify their existing machinery and equipment assembly. With our years of experience, we recognise that no two projects or clients are the same, so our services can be flexible and tailored to meet the unique needs of each company we work with.

### Experienced machinery relocation

With several decades-worth of combined experience we have grown as a company, honed our skills and built an unrivalled knowledge of the requirements for heavy machinery moving. Our clients are always in safe hands when they engage our services. From moving equipment and machinery within a factory, to machinery transport and the entire relocation of production facilities across countries, we have the experience, tools, expertise and safety measures to ensure every project goes smoothly.

We work alongside your workforce to get the best possible results. We are proud of our customer service record and our friendly team of specialists will aid your crew and get the job done with the minimum disruption.





## Accurate machinery transportation & laser tracking

Having capable machine transporting tools is a key component to safe machinery relocation. Modern machinery is heavy and more sophisticated than ever, so accuracy plays an important role in successful transportation.

Fleurieu Cranes provides metrology (laser-tracking) – our in-house systems cater for floor-marking, alignment, measuring and levelling to ensure pin-point precision throughout the process.



## Machinery relocation service

Fleurieu Cranes offers a full machinery relocation package that takes into account all manner of disconnections, packing and dismantling to provide you and your business with the very best possible service.

Entire factories, heavy pieces of plant, or one single machine that needs to get moved or shifted – whatever you have in mind – we have the most experienced team for your machinery relocation.

### Fleurieu Cranes machinery relocation service checklist:

1. We can ensure electrics and mechanics are safely disconnected
2. We can decommission your machine(s) and get them ready for removal
3. If you have any access platforms, walkways, or any remaining infrastructure that needs to be shifted with your machines – we can take care of these as well
4. We can remove floor and ceiling fixings where required
5. All dismantled fixtures, fittings and parts can be documented, stored and reassembled by our professional team
6. We will only use Grade A industry-standard equipment and cranes for heavy lifting tasks – so you can rest assured your machines are safe with us
7. We follow all official rules and regulations when it comes to secure packing, loading, transporting and reassembling.



# Service and Maintenance

## Our purpose-built crane-friendly workshop facility provides servicing, repair and preventative maintenance to your crane and lifting equipment.

Fleurieu Cranes specialises in the repair and maintenance of all types of cranes and lifting equipment, helping reducing down-time and making your business safe and more efficient.

Fleurieu Cranes' experienced team of technicians ensures your lifting equipment is working safely and efficiently. Our technicians are certified and extensively trained to service and maintain your equipment to the highest Australian standards. They can accurately assess your equipment, it's utilisation and provide the most appropriate solution to extend it's lifecycle.

Whether you want an emergency repair or planned maintenance, contact us to get a seamless, expert service.

### Our advantages include:

- ▶ Purpose-built 3785 sqm crane-friendly workshop facility
- ▶ Our inhouse team of factory trained technician
- ▶ Works available 24 hours 7 days a week
- ▶ Only quality OEM parts and components used
- ▶ On-site breakdown repairs and remote workshop operations

### Mobile Service units

Fleurieu Cranes also operates mobile service units that are able to travel to your site attending to breakdowns, servicing or repairs as necessary. Preventing an accident or breakdown is an essential part of our ongoing commitment to crane maintenance.

### Our services and maintenance offering:

- ▶ Service, repairs and maintenance on all crane makes and models
- ▶ 250hr, 500hr, 750hr & 1000hr services
- ▶ CraneSafe repairs for annual crane inspections
- ▶ Service, repairs and calibration of LMI Systems
- ▶ Upgrades & modifications for mine spec and site spec compliance
- ▶ Major inspections on all crane makes & models - including vehicle loading cranes
- ▶ Annual/quarterly inspections on vehicle loading cranes / crane trucks
- ▶ Diagnostics and repairs of electrical and hydraulic systems
- ▶ Complete field service capabilities and on-site breakdown repairs
- ▶ Supply of spare parts for all makes & models
- ▶ Insurance repairs





## Reasons to engage Fleurieu Cranes' maintenance department



### Peace of mind

Ensuring your cranes have been checked gives you and your team the confidence to be able to do the best job possible safe in the knowledge that you won't be let down by equipment. Knowing your cranes are maintained and compliant gives you and your team the confidence to push them to their capable limit time and time again.



### Long term finances

Cranes are a large investment, expecting to get the returns needed to feed the financier can be difficult, let Fleurieu Cranes bear the worry, our ability to reach further and spread the utilisation means reduced costs to you.



### Professional pride

No one wants to be working with a dirty, unchecked or potentially dangerous crane so do yourself a favour and make sure you only operate with machinery that you're proud to call your own. Our experience shows that preventative maintenance works as a risk mitigating strategy in avoiding breakdowns, and worse – accidents! Don't find out the hard way the cost of rectifying a fault whilst in a remote location in the middle of no-where.



# Lift Study Centre

**Our lift studies are individually designed to meet the needs of our customers.**

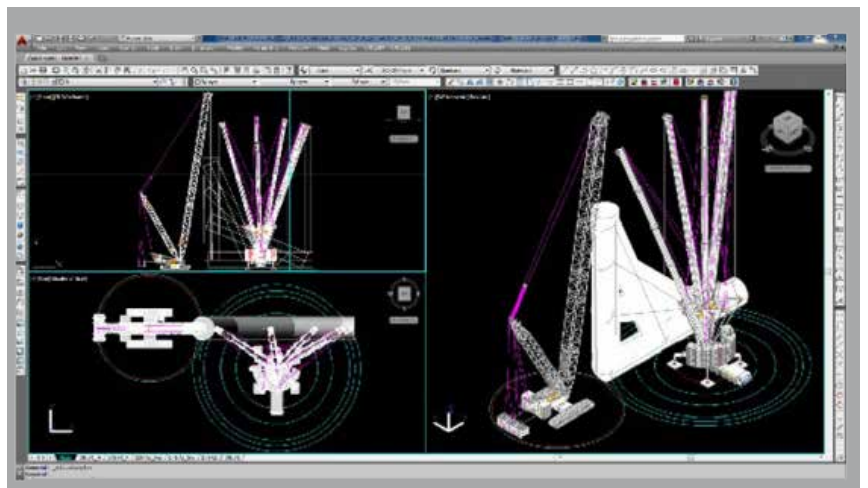
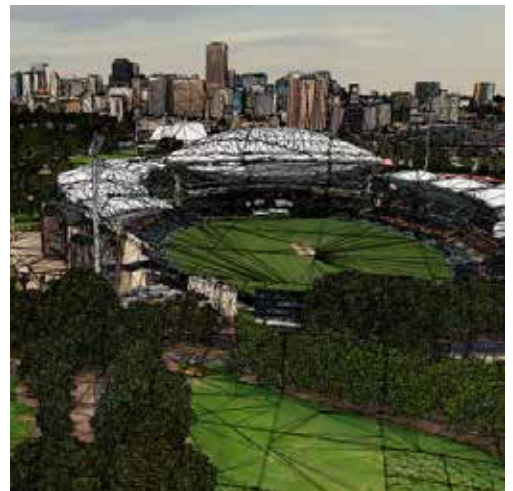
Fleurieu Cranes provide a dedicated Lift Study Centre to help identify and assist your project.

Our team of engineers and back office support staff are able to develop project specific Lift Studies with the greatest level of accuracy. We utilise state of the art systems and software (including AutoCAD, Nearmap, KranXpert, CraniMAX, LICCON, and various other crane manufacturer specific programs) to accurately plan your project.

Our specialist lift team can tailor a lift solution, plan and advise the right equipment suitable to your individual project requirements.

**Our benefits include:**

- ▶ Identify key site restraints
- ▶ Identify access, laydown and site setup locations
- ▶ Identify lift weight capacity and boom reach requirements
- ▶ Allows forward planning before projects get underway
- ▶ Comprehensive lift study plans
- ▶ Identify cost drivers to ensure appropriate efficiencies across your project





# RAISING THE BAR





## Our extensive crane fleet

**We ensure well-planned, well-executed, and hassle-free projects for our customers. We operate a fully versatile fleet of 45+ cranes, capable of completing any job, safely and efficiently.**

By selecting only the best-in-class cranes from top manufacturers, we assure superior service for your projects from planning through to execution.



### City Cranes

City-Class cranes are extremely versatile and compact machines that can be used in a wide variety of applications.

They feature a small footprint, adjustable turning circle and a long boom configuration, making them the ideal crane of choice for tight access lifting solutions. These great taxi-cranes are used extensively in residential and commercial construction projects, and can be deployed to site extremely fast. These cranes will go where other cranes won't!

## Pick and Carry Cranes

Franna cranes are a perfect example of Australian world-class ingenuity and innovation.

Manufactured in Australia since 1980, Franna cranes are designed for Australian conditions and unlike a 'conventional' crane with outriggers Frannas can pick-and-carry a load – placing it wherever required. These multi-purpose cranes are an essential staple of any industrial, construction, mine and worksite – and their ability to lift large and heavy loads safely makes the Franna a popular crane-of-choice.



## All Terrain

We also have a large fleet of All-Terrain cranes and as the name suggests these cranes can cover all types of terrain, making them extremely versatile.

Ranging from 40t to 700t in capacity our All-Terrain cranes can be quickly deployed, configured and rigged to meet your lifting requirements. With excellent maneuverability and safety in its design the All-Terrain cranes are the perfect choice for pre-cast panel erection, industrial & shutdown work, infrastructure construction projects, steel erection, bridge construction, and wind farm assembly and maintenance.



## Crawler Cranes

An integral part of the fleet is the range of crawler cranes we have available.

Perfect for Civil, Mining and Infrastructure projects, our crawler cranes can be mobilised to site and ensure all of your heavy lifting requirements are performed in the most cost efficient way. Known for their outstanding stability and manoeuvrability, these machines can lift serious loads safely and efficiently.





# Crane fleet inventory

## Fleurieu Cranes have a broad range of Crane Hire options and lifting capacities to deliver any project.

No project is too big or too small for our comprehensive crane fleet. Our range consists of Frannas, City Cranes, All Terrain Cranes and Crawler Cranes – with lifting capacities ranging from 3T to 700T.

### CITY CRANES

MODEL	LIFTING CAPACITY
TADANO GR-160N-2	16T
TADANO GR-200EX-3	20T

### PICK & CARRY

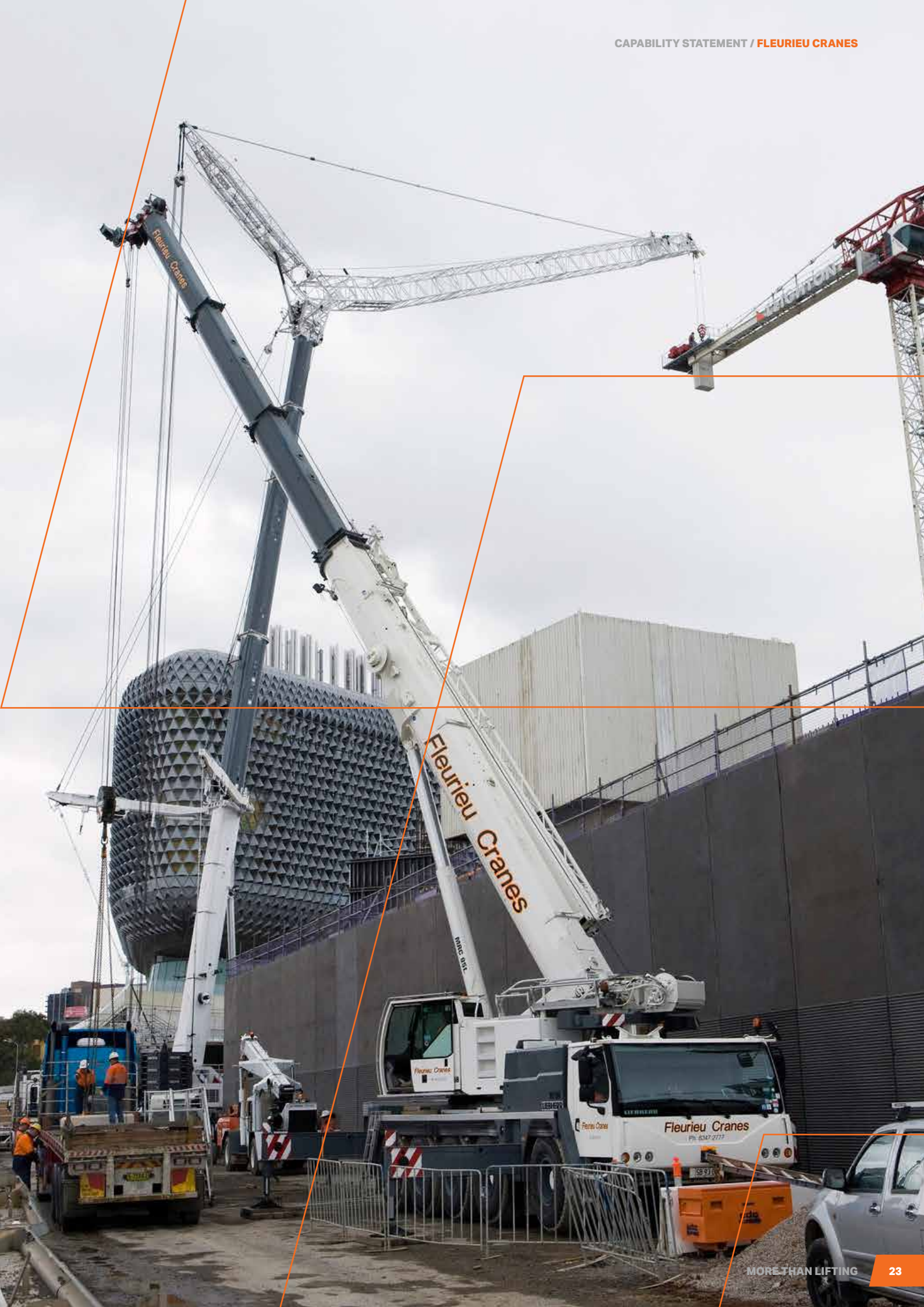
MODEL	LIFTING CAPACITY
FRANNA AT15	15T
FRANNA AT20	20T
FRANNA AT22	22T
FRANNA MAC25	25T
TIDD PC28	28T
FRANNA AT40	40T

### CRAWLER CRANES

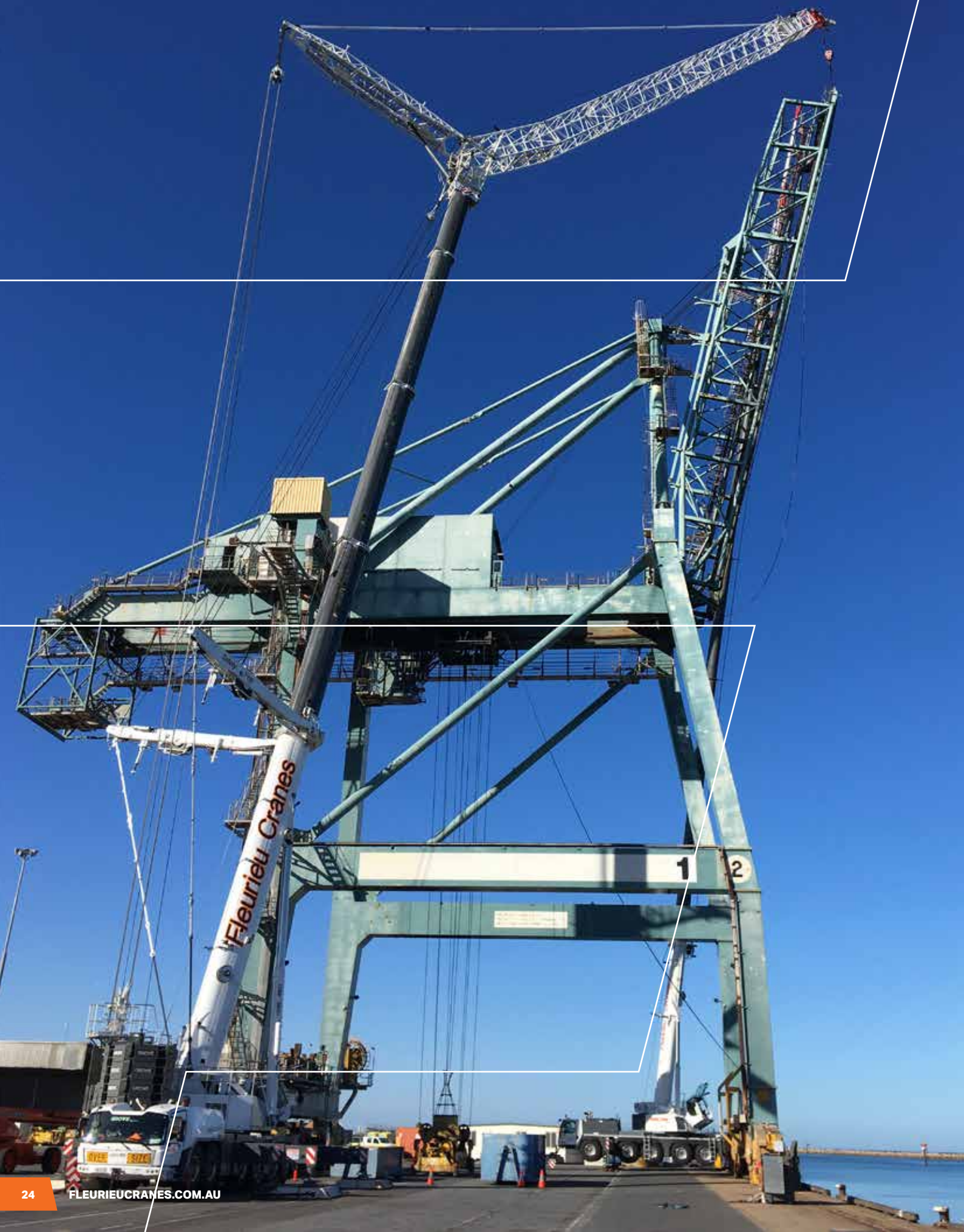
MODEL	LIFTING CAPACITY
CRAWLER	3T

### ALL-TERRAIN

MODEL	LIFTING CAPACITY
TADANO GT-300EL - TRUCK MOUNTED	30T
TEREX AC40/2L	40T
KATO NK550VR - TRUCK MOUNTED	55T
GROVE GMK 3060L-1	60T
LIEBHERR LTM 1070-4.2	70T
LIEBHERR LTM 1095-5.1	95T
GROVE GMK4100	100T
LIEBHERR LTM 1110-5.1	110T
LIEBHERR LTM 1130-5.1	130T
GROVE GMK5150L	150T
DEMAG AC 220-5	220T
TADANO AC 6.300-1	300T
GROVE GMK6400	400T
LIEBHERR LTM 1650-8.1	700T







## Our Culture

**Our culture is core to who we are and sets the standard of how we operate as a company. We go beyond to deliver the best lifting solutions – safely.**

Fleurieu Cranes prides itself on being the best. Our experienced and cohesive team, turn up everyday with a sense of purpose, ensuring we exceed expectations.

### Our Mission

We work closely with our stakeholders, using the best people, plant, equipment, expertise, and project logistics to deliver the best lifting solutions – efficiently and safely.

### Our Vision

To be more than just lifting. Fleurieu Cranes will be recognised as innovators and experts, with a range of services that make life easier and safer for our customers, employees, community, and the environment.

### Our Values



#### Safety

Safety and wellbeing is our first priority, for our people, customers, environment, and within the communities we operate.



#### Respect

We respect everyone we work with, and are inclusive of the people within the communities we operate.



#### Beyond Good

We go well beyond good, and achieve great in all aspects of what we do.



#### Integrity

We do what we say we will, and always act honestly, ethically and transparently.



#### Sustainability

We all play a role in ensuring we have a sustainable business within a sustainable environment.



#### Team Work

We work as one team at Fleurieu Cranes, with our customers and anyone we work alongside. This is the key to our success.



## HSEQ

**Fleurieu Cranes are committed to providing quality project outcomes to the highest standards while maintaining a focus on safety and operating sustainable work environments.**

Fleurieu Cranes are independently certified to: Safety Management System ISO 45001:2018, Environmental Management System ISO 14001:2015 and Quality Management System ISO 9001:2015 demonstrating continuous improvement and adherence to national standards.



### Safety

We strive to nurture a 'Safety First' culture, positioning us as the industry benchmark, by working together to ensure safe work environments for our staff, project partners and our community.

Safety is our main priority, validated by our Safety Management Systems being certified to ISO 45001:2018, our exemplary safety record and comprehensive internal policies and procedures.

At Fleurieu Cranes, the health, safety and well-being of our staff and project partners is our main priority. Our skilled and experienced staff are our key asset, they're part of our working family, their health and safety is our responsibility. Likewise, our project partners, contractors and the community are treated with the same importance.

All Fleurieu Cranes staff and contractors are committed to actively supporting and maintaining our HSEQ management system. This commitment ensures a high standard is continually maintained throughout.

We ensure all our employees, subcontractors and stakeholders fully understand and support our vision of "Safety First". We encourage clear and open communication, creating greater awareness and in doing so help prevent injury and improve safety performance.

#### Our safety initiatives include:

- ▶ Dedicated HSEQ Supervisors providing job specific SWMS, methodology's and safety advice as required.
- ▶ Latest lifting and safety equipment.
- ▶ Scheduled and regular inspections of Crane and lifting equipment.
- ▶ Improved communication that welcomes feedback and initiative.
- ▶ Emphasising our 'Safety First' culture company wide.





## Environmental

We endeavour to protect and preserve the environments in which we operate by enhancing our approach through innovation and reducing our carbon footprint.

Our commitment to protecting the Environment is validated by our Environmental Management Systems being certified to ISO 14001:2015.

Reducing our environmental impact is an integral component in all our operations. This begins with the careful planning, consideration and our overall approach of every project.

Our environmental policy is also part of our commitment to the greater community and recognises the importance of environmental protection and sustainability. All Fleurieu Cranes employees have a responsibility to perform their duties to ensure the safety of the environment and comply with the Environmental Protection Act 1993.

### Our environmental initiatives include:

- ▶ 100,000 litre rainwater storage and filtration system purpose built at our Wingfield head office and supplies all water usage at this premises.
- ▶ 15kW solar power system (consisting of 80 panels) installed at our head office.
- ▶ We have partnered with Trees for Life to offset our crane and vehicle carbon emissions.



## Quality

We uphold our commitment to delivering quality project outcomes through maintaining our high standards of leadership, professionalism and customer service.

We are committed to delivering quality products and services by communicating and understanding our customers individual needs. This is validated by our Quality Management Systems being certified to ISO 9001:2015.

In addition, Fleurieu Cranes is fully compliant with the Building Code 2016 (formerly National Code of Practice) for the Construction Industry and all Government Implementation Guidelines for such. Fleurieu Cranes has been assessed against the guidelines and is 'code compliant'.

### Our quality management initiatives include:

- ▶ Early engagement, project outline and agreement between both parties.
- ▶ Allocation of our experienced and specialised supervisors to each project ensuring a main point of contact, maximising efficiency, and successful project completion.
- ▶ Induction management.
- ▶ Dedicated Process Improvement Officer.
- ▶ Evidence-based decision making.
- ▶ Relationship management.





## Get in touch

We would love to hear about your project and discuss how Fleurieu Cranes can assist with its delivery.

Talk to us about how we can help.

### Head Office

7 - 9 Lafitte Road,  
Wingfield SA 5013

---

**Phone** (08) 8260 5122  
**Fax** (08) 8260 5922  
[service@fleurieucranes.com.au](mailto:service@fleurieucranes.com.au)

### Seaford Office

32-34 Eric Street,  
Seaford SA 5169

---

**Depot Manager**  
**Phone** 0407 444 021  
[seaford@fleurieucranes.com.au](mailto:seaford@fleurieucranes.com.au)

### Clare Depot

Clare, SA

---

**Regional Manager**  
**Phone** 0458 399 366  
[liam@fleurieucranes.com.au](mailto:liam@fleurieucranes.com.au)

### Port Augusta (Macweld Crane Hire)

Lot 945 Footner Road,  
Port Augusta SA 5700

---

**Depot Manager**  
**Phone** 0438 500 681  
[manager@macweldcranes.com.au](mailto:manager@macweldcranes.com.au)